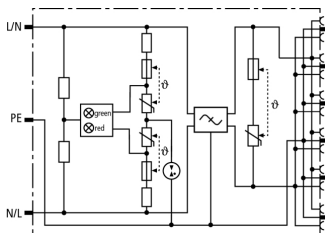


## SFL PRO 6X 19" (909 251)

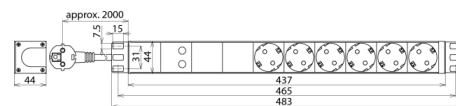
- Surge protection with monitoring device and disconnecter
- Interference suppressor filter
- Visual operating state (green) and fault indication (red)



Figure without obligation



Basic circuit diagram SFL PRO 6X 19"



Dimension drawing SFL PRO 6X 19"

Surge protective multiple socket outlet with mains filter for 482.6 mm (19 inches) data cabinets

Type	SFL PRO 6X 19"
Part No.	909 251
SPD according to EN 61643-11	Type 3
SPD according to 61643-1/-11	Class III
Nominal a.c. voltage ( $U_N$ )	230 V
Max. continuous operating a.c. voltage ( $U_C$ )	255 V
Nominal load current a.c. ( $I_L$ )	16 A
Nominal discharge current (8/20 $\mu$ s) ( $I_n$ )	3 kA
Total discharge current (8/20 $\mu$ s) [L+N-PE] ( $I_{total}$ )	5 kA
Combined impulse ( $U_{OC}$ )	6 kV
Combined impulse [L+N-PE] ( $U_{OC total}$ )	10 kV
Voltage protection level ( $U_P$ )	$\leq 1.5$ kV
Response time [L-N] ( $t_A$ )	$\leq 25$ ns
Response time [L/N-PE] ( $t_A$ )	$\leq 100$ ns
Max. mains-side overcurrent protection	16 A gL/gG or B 16 A
Short-circuit withstand capability for mains-side overcurrent protection with 16 A gL/gG	1.5 kA <sub>rms</sub>
Temporary overvoltage (TOV) [L-N] ( $U_T$ )	335 V / 5 sec.
Temporary overvoltage (TOV) [L/N-PE] ( $U_T$ )	400 V / 5 sec.
Temporary overvoltage (TOV) [L+N-PE] ( $U_T$ )	1200 V + $U_{CS}$ / 200 ms
TOV characteristic [L-N]	withstand
TOV characteristic [L/N-PE]	withstand
TOV characteristic [L+N-PE]	safe
Fault indication	red light
Operating state indication	green light
Number of ports	2
Operating temperature range ( $T_U$ )	-20°C...+40°C
Connecting cable	approx. 2000 mm
Number of socket outlets	6
For mounting on	plug-in systems with earth contact according to DIN 49440 / DIN 49441
Enclosure material	anodised aluminium profile, silver
Place of installation	indoor installation
Degree of protection	IP 20
Dimensions	483 x 44 x 44 mm
Mains filter	according to EN 60939-1
Attenuation for f = 1 MHz, balanced	$\geq 32$ dB
Attenuation for f = 1 MHz, unbalanced	$\geq 30$ dB
Weight	1 kg
Customs tariff number	85369010
GTIN	4013364132573
PU	1 pc(s)

We reserve the right to introduce changes in performance, configuration and technology, dimensions, weights and materials in the course of technical progress. The figures are shown without obligation.