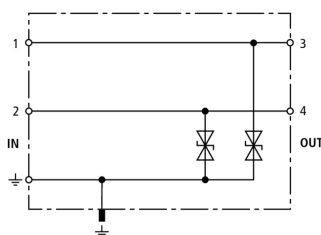


DCO RK E 12 (919 987)

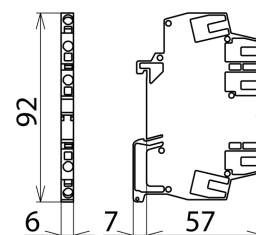
- Surge protection with terminal blocks
- Can be subjected to high nominal currents
- For installation in conformity with the lightning protection zones concept at the boundaries from 1 – 2 and higher



Figure without obligation



Basic circuit diagram DCO RK E 12



Dimension drawing DCO RK E 12

Finely limiting surge protective device with efficient diodes to earth for two single lines with common reference potential as well as unbalanced interfaces.

Type Part No.	DCO RK E 12 919 987
SPD class	TYPE 2 PI
Nominal voltage (U_N)	12 V
Max. continuous operating d.c. voltage (U_c)	13 V
Max. continuous operating a.c. voltage (U_c)	9 V
Nominal current (I_L)	10 A
C1 Total nominal discharge current (8/20 μ s) (I_n)	0.8 kA
C1 Nominal discharge current (8/20 μ s) per line (I_n)	0.4 kA
Voltage protection level line-line for I_n C1 (U_p)	≤ 50 V
Voltage protection level line-PG for I_n C1 (U_p)	≤ 25 V
Voltage protection level line-line at 1 kV/ μ s C3 (U_p)	≤ 36 V
Voltage protection level line-PG at 1 kV/ μ s C3 (U_p)	≤ 18 V
Cut-off frequency line-PG (f_c)	2.5 MHz
Capacitance line-line (C)	≤ 1.2 nF
Capacitance line-PG (C)	≤ 2.5 nF
Operating temperature range	-40°C...+80°C
Degree of protection	IP 00, with cover IP 20
For mounting on	35 mm DIN rails acc. to EN 60715
Connection (input/output)	spring / spring
Cross-sectional area, solid	0.08 - 2.5 mm ²
Cross-sectional area, flexible	0.08 - 2.5 mm ²
Earthing via	DIN rail / terminal
Enclosure material	polyamide PA 6.6
Colour	yellow
Test standards	IEC 61643-21 / EN 61643-21
SIL classification	SIL1 / SIL3 ^{*)}
Approvals	GOST
Weight	33 g
Customs tariff number	85363010
GTIN	4013364092952
PU	1 pc(s)

^{*)} For more detailed information, please visit www.dehn.de/en/sil/

We reserve the right to introduce changes in performance, configuration and technology, dimensions, weights and materials in the course of technical progress. The figures are shown without obligation.