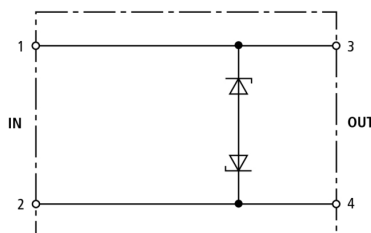


DCO RK D 5 24 (919 986)

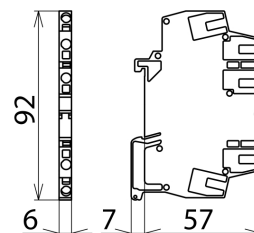
- EMC protection with terminal blocks
- High nominal current
- For installation in conformity with the lightning protection zones concept at the boundaries from 1 – 2 and higher



Figure without obligation



Basic circuit diagram DCO RK D 5 24



Dimension drawing DCO RK D 5 24

Surge protective device with efficient diodes between the signal lines for SIEMENS-SPS S7-300 digital output modules (laboratory tested). The terminal allows increased EMC protection. No connection to PG.

| Type | DCO RK D 5 24 |
|--|---------------------------------|
| Part No. | 919 986 |
| SPD class | TYPE 4 PI |
| Nominal voltage (U_N) | + 24 V / - 5 V |
| Max. continuous operating d.c. voltage (U_c) | + 30 V / - 6 V |
| Nominal current (I_L) | 10 A |
| C1 Total nominal discharge current (8/20 μ s) (I_n) | 0.3 kA |
| C1 Nominal discharge current (8/20 μ s) per line (I_n) | 0.3 kA |
| Voltage protection level line-line for I_n C1 (U_p) | ≤ 70 V |
| Voltage protection level line-line at 1 kV/ μ s C3 (U_p) | ≤ 45 V |
| Cut-off frequency line-line (f_c) | 3.5 MHz |
| Capacitance line-line (C) | ≤ 2 nF |
| Operating temperature range | -40°C...+80°C |
| Degree of protection | IP 00, with cover IP 20 |
| For mounting on | 35 mm DIN rail acc. to EN 60715 |
| Connection (input/output) | spring / spring |
| Cross-sectional area, solid | 0.08 - 2.5 mm ² |
| Cross-sectional area, flexible | 0.08 - 2.5 mm ² |
| Enclosure material | polyamide PA 6.6 |
| Colour | yellow |
| Test standards | IEC 61643-21 / EN 61643-21 |
| SIL classification | SIL 1 / SIL3 [*] |
| Approvals | GOST |
| Weight | 33 g |
| Customs tariff number | 85363010 |
| GTIN | 4013364092990 |
| PU | 1 pc(s) |

^{*}For more detailed information, please visit www.dehn.de/en/sil/

We reserve the right to introduce changes in performance, configuration and technology, dimensions, weights and materials in the course of technical progress. The figures are shown without obligation.