

USD 15 V11 S B (924 051)

- Plug-in surge arrester with two-stage protective circuit
- Integrated decoupling of the protective circuit to the terminal equipment
- For installation in conformity with the lightning protection zones concept at the boundaries from $0_B - 2$ and higher

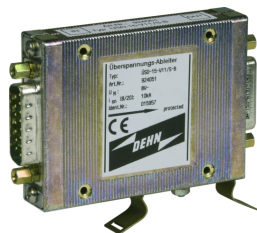
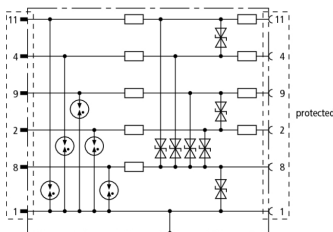
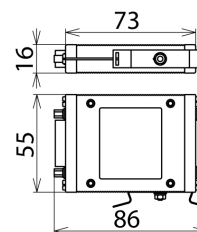


Figure without obligation



Basic circuit diagram USD 15 V11 S B



Dimension drawing USD 15 V11 S B

Energy-coordinated two-stage arrester for RS422, V.11 interfaces with diode protective circuit at the input. 15-pin D-SUB version.

Type	USD 15 V11 S B
Part No.	924 051
SPD class	TYPE 2 PJ
Nominal voltage (U_n)	8 V
Max. continuous operating d.c. voltage (U_c)	8.5 V
C2 Nominal discharge current (8/20 μ s) line-PG (I_n)	2.5 kA
C2 Nominal discharge current (8/20 μ s) SG-PG (I_n)	7.5 kA
Voltage protection level line-line/line-SG C2 (U_p)	≤ 15 V
Voltage protection level SG-PG for I_n C2 (U_p)	≤ 20 V
Voltage protection level line-line/line-SG at 1 kV/ μ s C3 (U_p)	≤ 11 V
Voltage protection level SG-PG at 1 kV/ μ s C3 (U_p)	≤ 15 V
Series resistance per line	37 ohms
Operating temperature range	-40°C...+80°C
For mounting on	D-SUB or 35 mm DIN rails acc. to EN 60715
Connection (input/output)	D-SUB 15 plug / D-SUB 15 socket
Pinning	line: 2/9/4/11, SG: 8, PG: 1
Earthing via	earthing screw or DIN rail
Test standards	IEC 61643-21 / EN 61643-21
Approvals	GOST
Weight	147 g
Customs tariff number	85363010
GTIN	4013364033986
PU	1 pc(s)

We reserve the right to introduce changes in performance, configuration and technology, dimensions, weights and materials in the course of technical progress. The figures are shown without obligation.